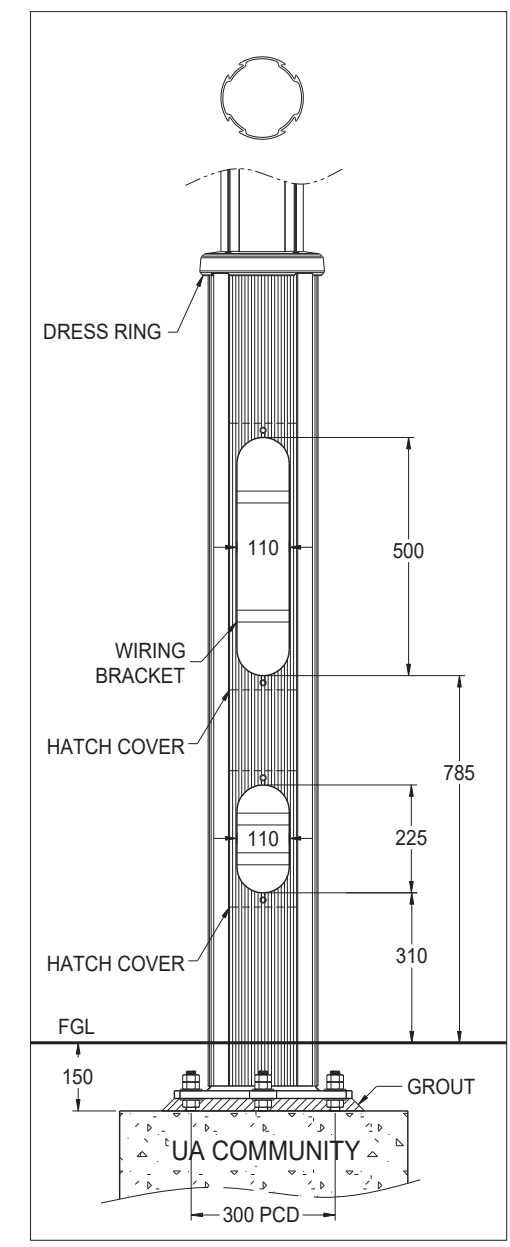
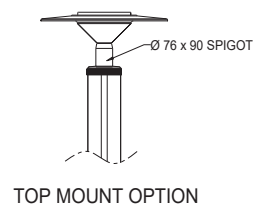
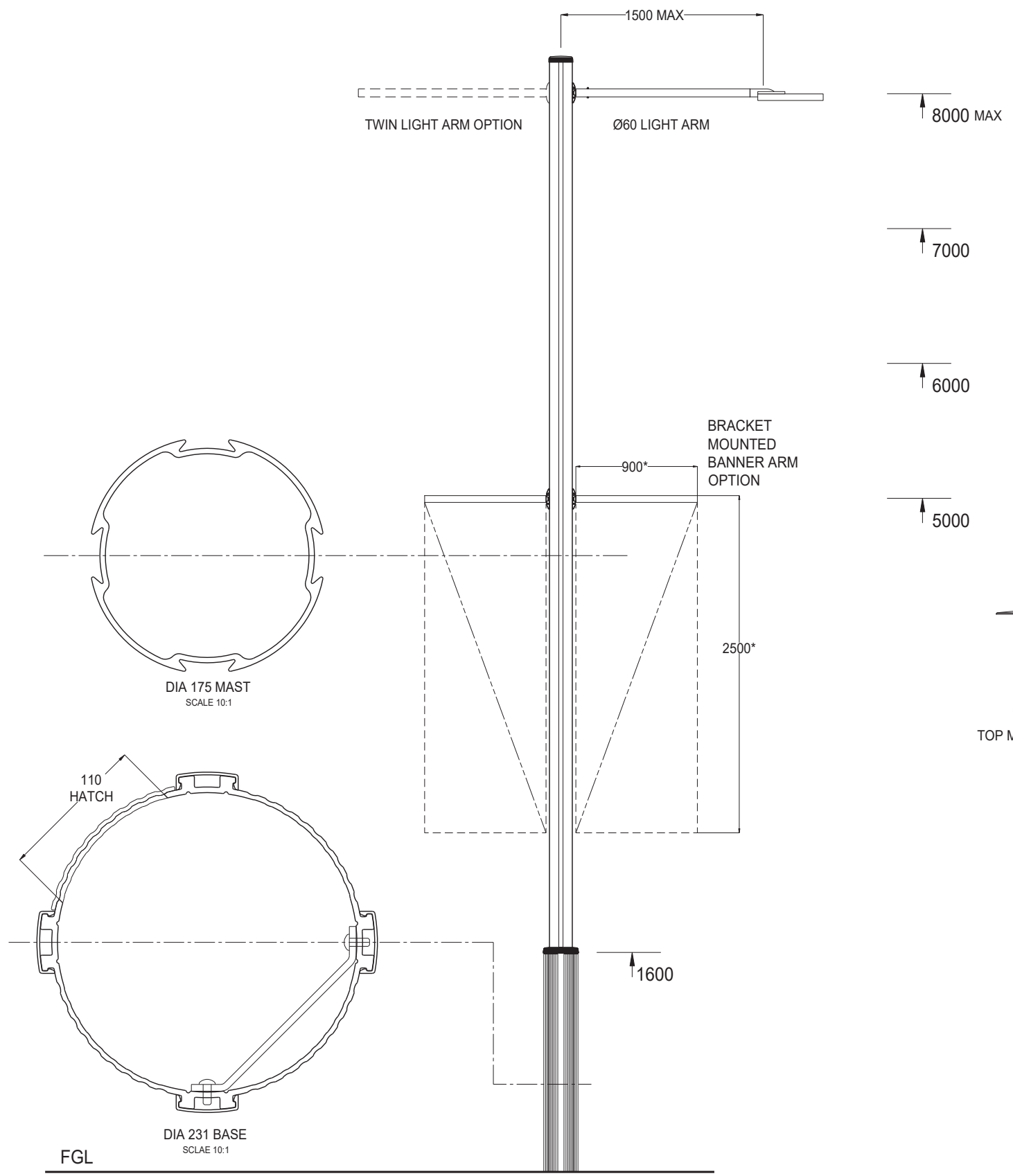
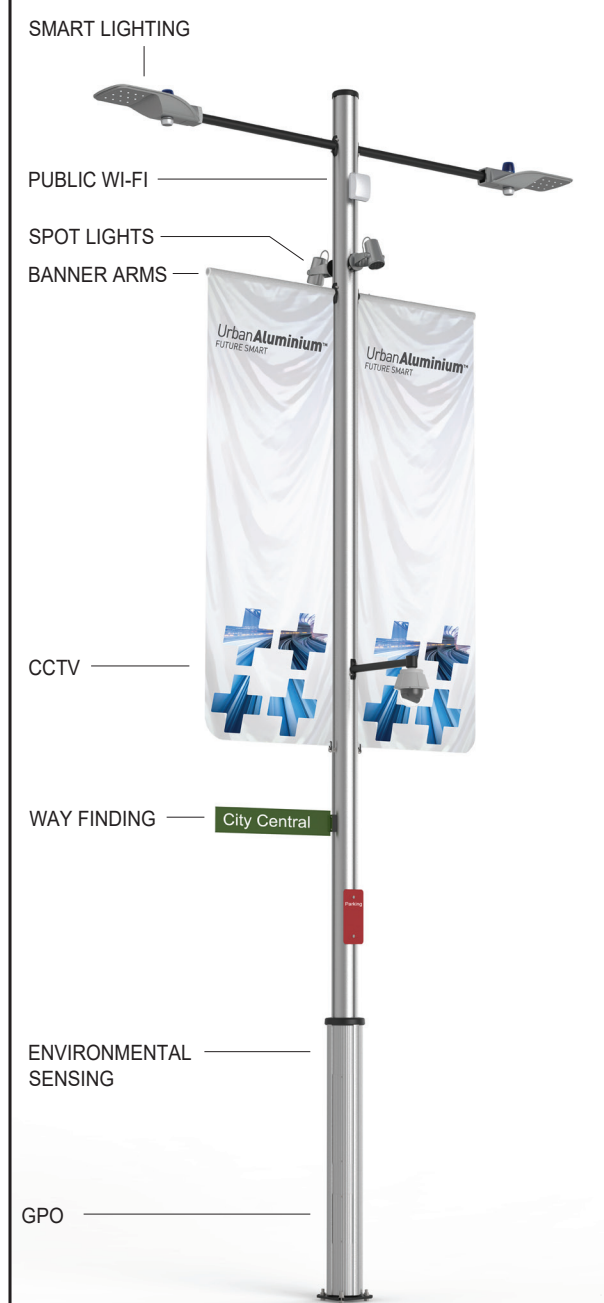


ISSUE	C.D. No.	REVISION	LOCATION	BY	DATE



HIGH CAPACITY BASE DETAIL
DIA 222 CLEAR INTERNAL DIMENSION

*NOTE
BANNER SIZE AND MOUNTING HEIGHT ARE
DEPENDENT ON WIND REGION AND TERRAIN
CATEGORY



UA COMMUNITY MFPs ARE ADAPTABLE TO MANY 3rd PARTY TECHNOLOGY APPLICATIONS

Foundation bolts
M20 @ 300 PCD

NOTE
All poles manufactured in accordance
with relevant standards

Pole footings to be engineered by
others to suit local
environmental and ground conditions.

NOTE
FINISH OPTIONS
CLEAR ANODISED
COLOUR ANODISED
POWDER COAT PAINT

IP 65 rated electrical enclosures to be used
for electrical connections.
All buried components to be coated with
DUREBILD STE 150 microns

DO NOT SCALE DRAWING DIMENSIONS IN MILLIMETRES	DRAWN BY AC	DATE 29.5.20	DOCUMENT No.
THIRD ANGLE PROJECTION	CHECKED BY	DATE	DISC FILE No.
DIMENSION TOLERANCES UNLESS OTHERWISE SPECIFIED	APPROVED BY	DATE	SCALE
2 PLACE DECIMAL 0.00 ± 0.1mm	QUALITY APPROVED BY	DATE	ISSUE
1 PLACE DECIMAL 0.0 ± 0.25mm			
0 PLACE DECIMAL 0 ± 0.50mm			
ANGULAR ± 15 MINUTES (0.25°)			

SHEET	Urban Aluminium Pty Ltd www.urban-al.com.au info@urban-al.com.au	Unit 10, 7 Gundah Rd, Mt Kuring-Gai NSW 2080 AUSTRALIA Tel. +612 8921 5400
-------	--	--



TITLE
COMMUNITY MFP

PROJECT MULTI-FUNCTION POLES	DRAWING No. UA-0341
PART No.	SHEET No.